

# MGN 3300 / 4000 GAS BURNER

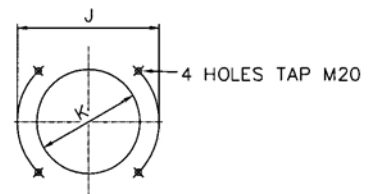
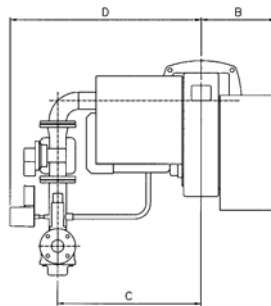
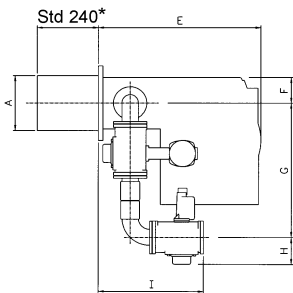
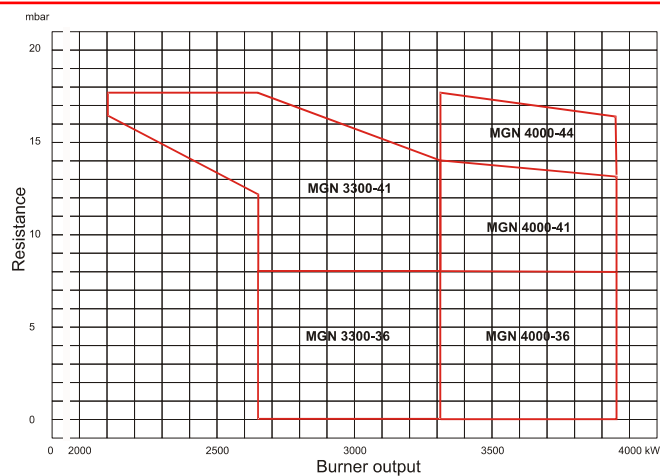
2102 - 3958 kW



- Energy saving and compatible with environmental requirements
- Quiet in operation and designed for easy maintenance
- reliable and trouble-free
- Designed and approved in accordance with the European Standard EN 676
- 2 stage or fully modulating operation
- Plug-in contact facilitates the installation

**NU-WAY**

Type		MGN 3300	MGN 4000
Capacity	kW	2102-3321	3321-3958
Motor	V/Hz	400 / 50	
	kW/A	36	7.5 / 15
		41	11 / 22.8
		44	-
Control unit		Satronic/Landis	Satronic/Landis
Max inlet pressure		300	300
Flame monitoring		UV cell	UV cell
Operation mode		2 stage or fully Modulating	
Air damper motor		•	•
Gross weight	kg	330	330
Volume	m <sup>3</sup>	2.344	2.344



\* Extended Lengths Available

Burner	A	B	øC	øD	E	F	G	H	I	J	øK
MGN 3300-36 MGN 3300-41	310	400	740	1000	906	145	760	163	590	545	330
MGN 4000-38 MGN 4000-41 MGN 4000-44	310	400	740	1000	906	145	760	163	610	454	330

**NU-WAY**

**Nu-way Limited**  
P O Box 1, Vines Lane  
Droitwich  
Worcestershire  
WR9 8NA

tel: +44 (0) 1905 794331  
fax: +44 (0) 1905 794017

email: info@nu-way.co.uk  
web: www.nu-way.co.uk

Issue 1 03/08