

BBC

Gas/Oil Combination Beta Burner



Features

- Designed for low pressure air operation
- Spark ignited pilot
- Available with stainless steel or refractory baffle
- UV flame supervision
- Partial or complete packaged versions available with air and fuel manifolds
- Rugged heavy gauge steel construction
- Preheated air versions to 900°F (480°C)

Benefits

- Supports a wide variety of applications
- Highly reliable, durable design
- Broad range of air/fuel ratios
- Convergent tile provides higher velocity flames for higher convective heat transfer
- Diverging tile permits ignition from hot furnace



Hauck's BBC Gas/Oil Combination Beta Burner is designed for exceptionally long life in continuous or intermittent operation in furnace, kiln and dryer environments. The BBC is well suited for applications operating under back-pressure. Burner capacities range from 2.5 million to more than 100 million Btu/hr (730 to 29,300 kW). Preheated air versions are available up to 900°F (480°C). The BBC is designed to operate with all types of industrial fuel oils, including heavy oils, and with all industrial fuel gasses with or without pre-heat. The burner can fire with diverging tiles or converging tiles for shorter, higher velocity flames.

HAUCK MANUFACTURING COMPANY

P.O. Box 90
Lebanon, PA 17042
Phone: 717-272-3051
Fax: 717-273-9882
www.hauckburner.com

Combustion Excellence Since 1888

BBC

GAS/OIL COMBINATION BETA BURNER



ADVANTAGES OF THE BBC

Supports a Wide Variety of Applications

Highly Reliable, Durable Design

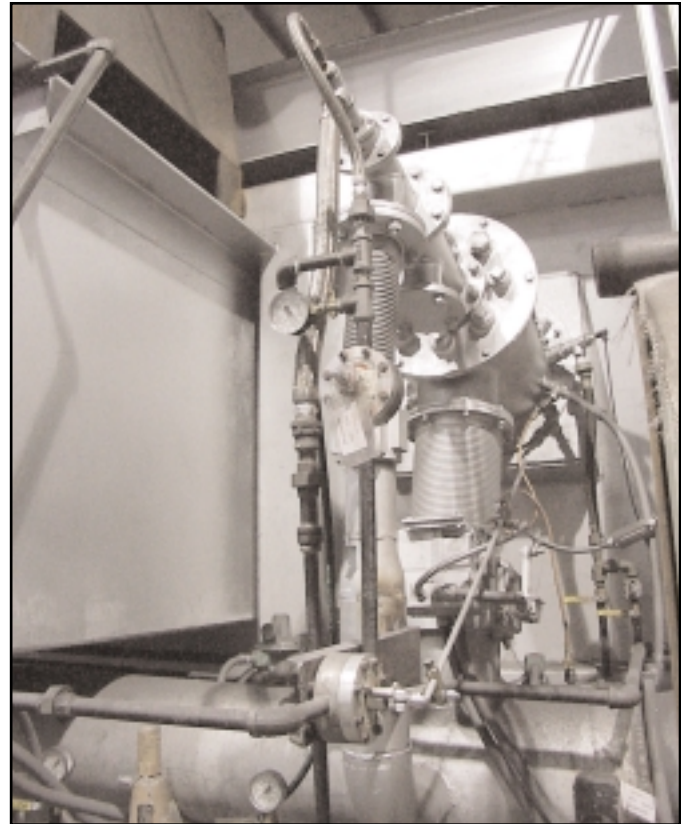
Broad Range of Air/Fuel Ratios

Diverging Tile Permits Ignition from Hot Furnace

Beta burners are baffle type burners designed for low air pressure operation in a wide range of applications including steel reheat furnaces, rotary kilns, gypsum kettles, air heaters and incinerators. Available with stainless steel or refractory baffle with application temperatures of 2000°F (1090°C) and 2800°F (1540°C) respectively. The 1100 and 2100 series can operate with air preheat temperatures up to 600°F (315°C). The 3100 series can operate with air preheat temperatures up to 900°F (480°C).

The BBC is designed to operate with all types of industrial fuel oils, including heavy oils, and with any clean industrial fuel gas with a gross calorific value of 500 Btu/scf (4700 Kcal/nm³) or greater.

Capacities range from 2.5 million to more than 100 million Btu/hr (730 to 29,300 kW). The Beta burner's flame shapes are well defined throughout the burner's operating range.



Aluminum furnace with Beta Burner utilizing cold air and heavy oil.

Fuel turndown is 8:1 with higher thermal turndown possible with excess air firing.

Nominal burner air supply pressure is 8 osig (3450 Pa). Nominal gas supply pressure is 4 osig (1725 Pa).

The burner can be supplied with a self supporting tile for soft wall applications. For hard refractory installations, a self supporting tile or mandrel for field pouring of a burner port can be supplied. Consult Hauck for mounting options.

All burners are ignited by a spark ignited gas pilot and can utilize UV flame supervision. Diverging tile designs can be ignited from a hot furnace.

www.hauckburner.com